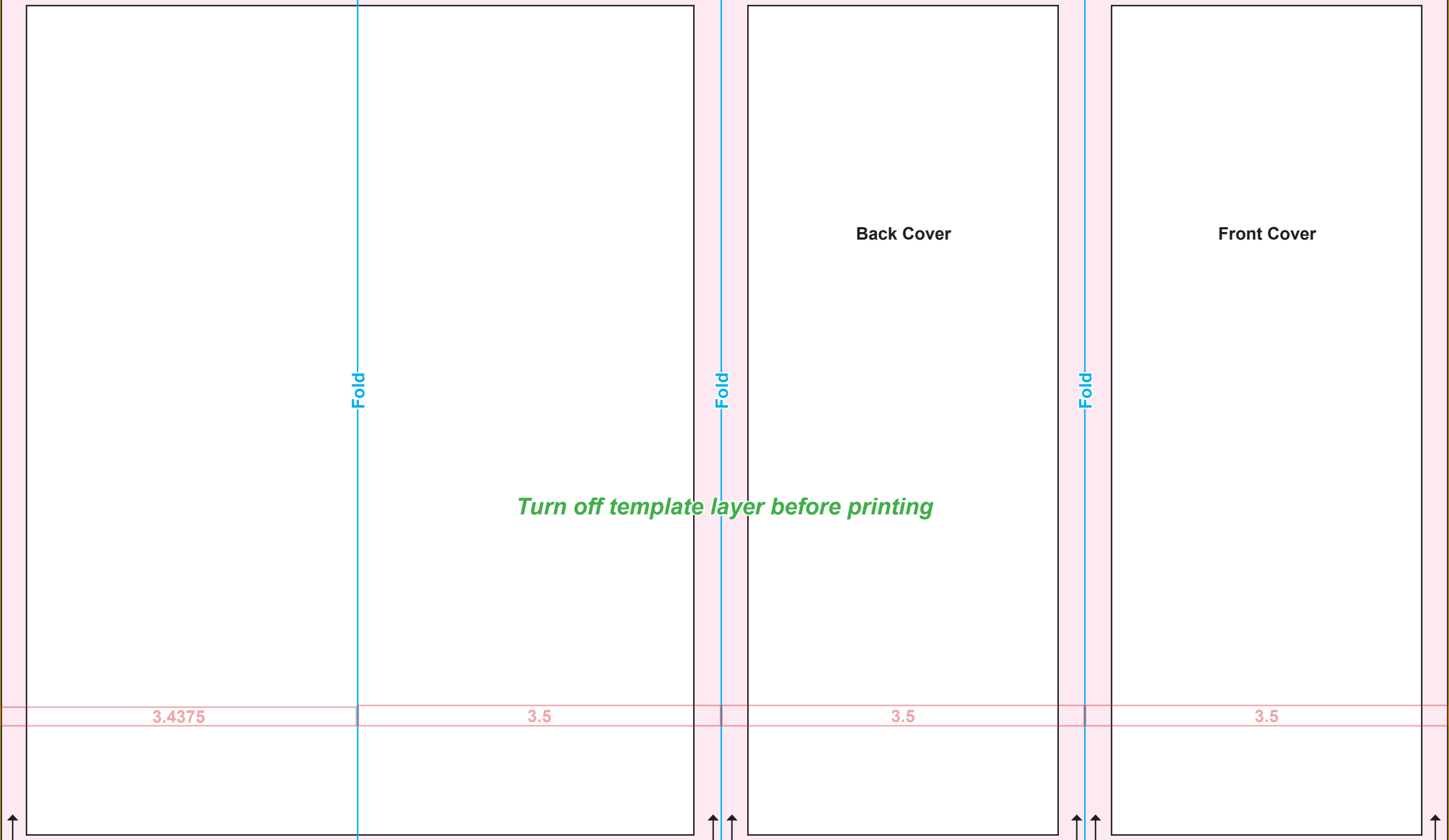


Bleed - 1/8" bleed is sufficient. Make sure if your project images go to the edge of the page you bring it all the way past the page to cover this yellow area.

Margins - 1/4" margin is usually sufficient. Make sure no important text or information extends into this area.



Turn off template layer before printing

Back Cover

Front Cover

Fold

Fold

Fold

3.4375

3.5

3.5

3.5



Margins- it is important to maintain margins on the front and back cover panels

Bleed

Bleed - 1/8" bleed is sufficient. Make sure if your project images go to the edge of the page you bring it all the way past the page to cover this yellow area.

Margins - 1/4" margin is usually sufficient. Make sure no important text or information extends into this area.

Reverse of Front Cover

Fold

Fold

Fold

Turn off template layer before printing

3.5

3.5

3.5

3.4375

Bleed