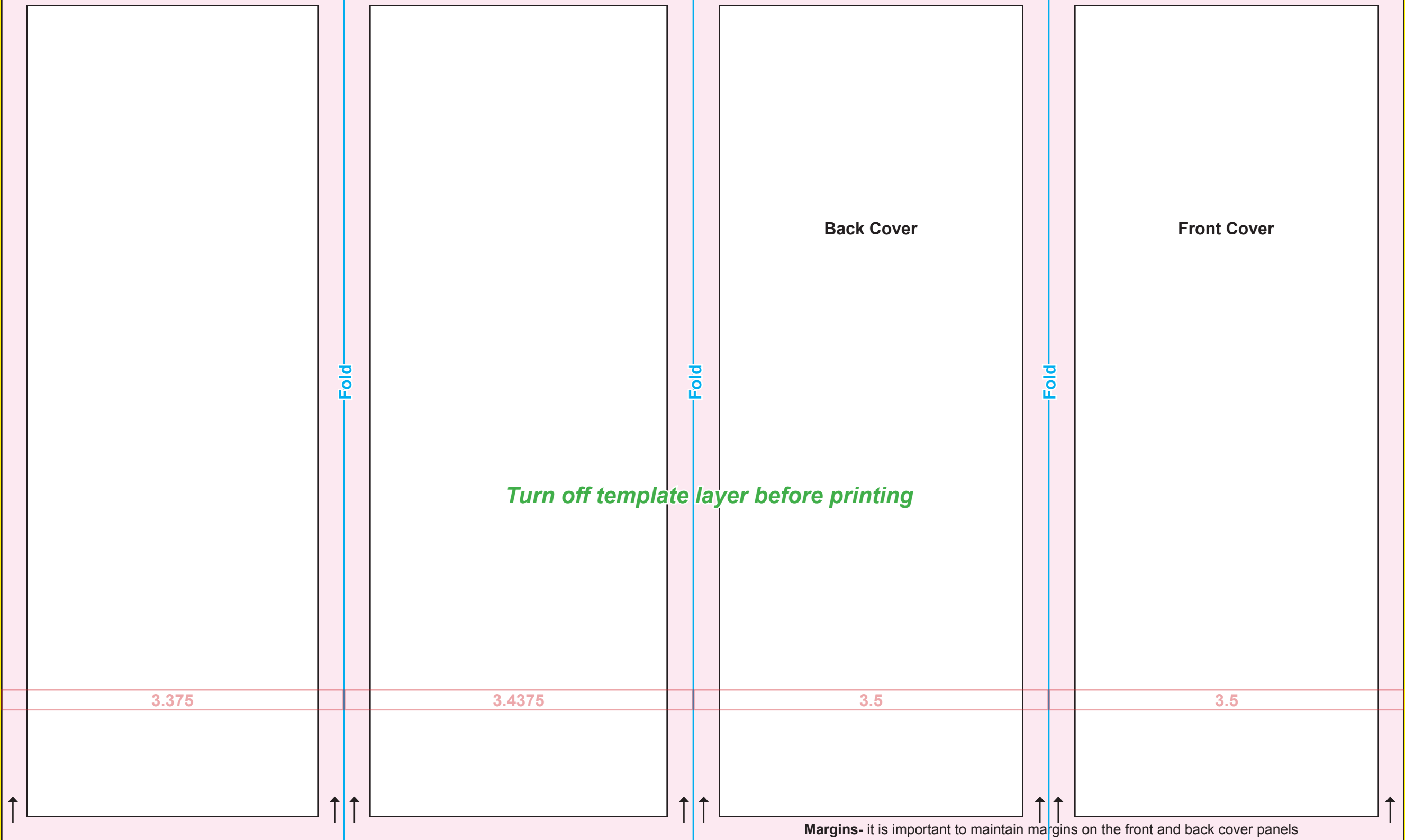


Bleed - 1/8" bleed is sufficient. Make sure if your project images go to the edge of the page you bring it all the way past the page to cover this yellow area.

Margins - 1/4" margin is usually sufficient. Make sure no important text or information extends into this area.



Back Cover

Front Cover

Fold

Fold

Fold

Turn off template layer before printing

3.375

3.4375

3.5

3.5

Margins- it is important to maintain margins on the front and back cover panels

Bleed

Bleed - 1/8" bleed is sufficient. Make sure if your project images go to the edge of the page you bring it all the way past the page to cover this yellow area.

Margins - 1/4" margin is usually sufficient. Make sure no important text or information extends into this area.

Reverse of Front Cover

Fold

Fold

Fold

Turn off template layer before printing

3.5

3.5

3.4375

3.375

Bleed