

Bleed - 1/8" bleed is sufficient. Make sure if your project images go to the edge of the page you bring it all the way past the page to cover this yellow area.

Margins - 1/4" margin is usually sufficient. Make sure no important text or information extends into this area.

Inside Fold Panel

Back Cover

Front Cover

Fold

Fold

Turn off template layer before printing

3.625

3.6875

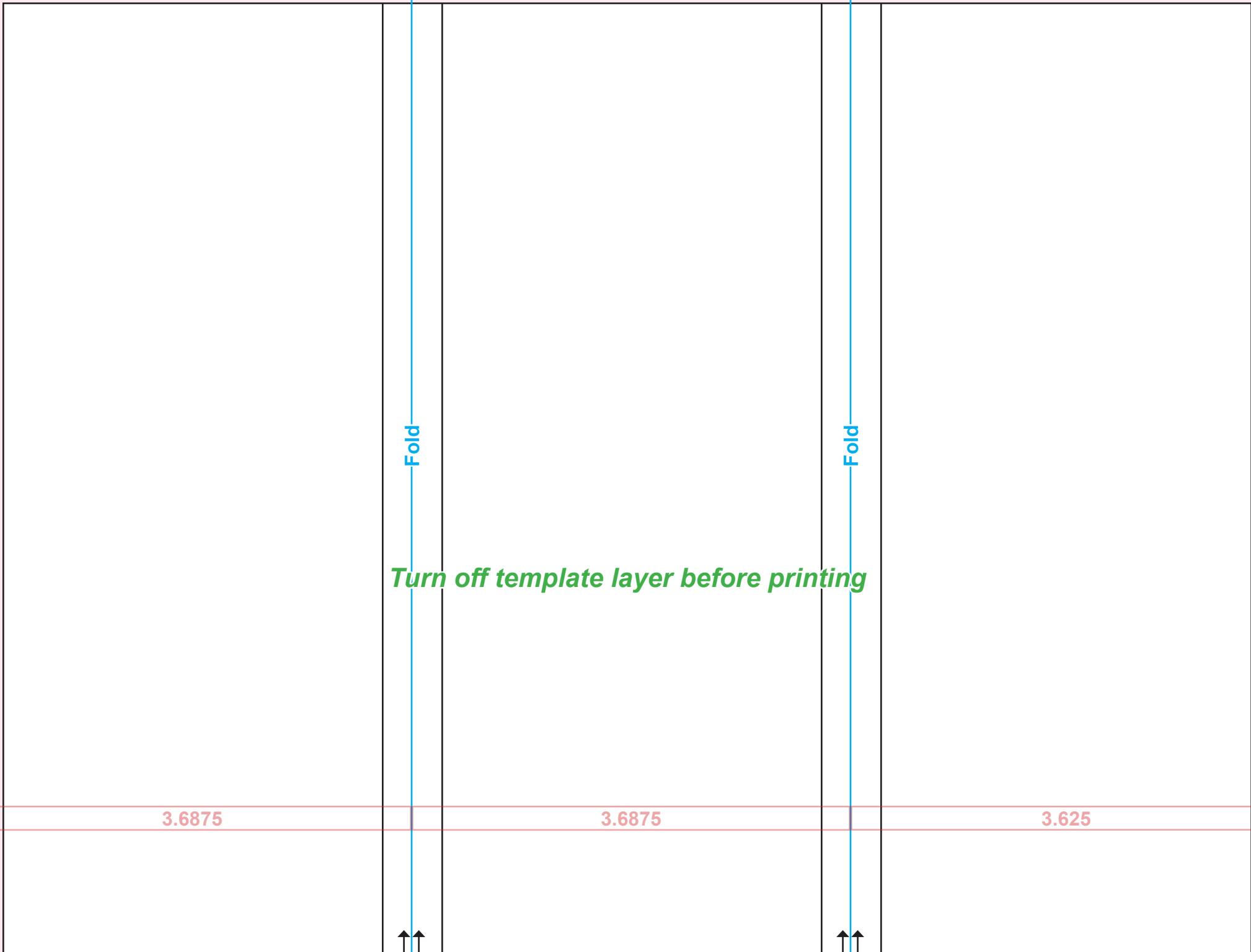
3.6875

Margins- As this is the outer part of the trifold it is important to maintain margins in between panels.

Bleed

Bleed - 1/8" bleed is sufficient. Make sure if your project images go to the edge of the page you bring it all the way past the page to cover this yellow area.

Margins - 1/4" margin is usually sufficient. Make sure no important text or information extends into this area.



Margins- As this is the inner part of the trifold it is less important to maintain margins in between panels.

Bleed